

Yearbook
2020

AVA

MA Landscape
Architecture



University of
East London

MA Professional Landscape Architecture

Dr B Snaith CMLI, G Woodfall CMLI

Our Professional Landscape Architecture programmes span practice and academia, investigating landscape at all scales. We are firmly grounded in professional practice and the complex issues addressed by landscape architects globally each day. We are taught by practitioners, work on live projects with real clients, make changes for the better in the environment while we learn, and we include work-shadowing placements in our programmes. Together we make tangible impacts in real places for real people.

At the same time, we promote an informed and self-directed critical outlook. We challenge our students to question accepted norms, and assumptions about what landscape is, what nature is, what beauty is, who the landscape is for, and what contemporary practice should be. We engage with theorists, with environmental and social concerns, and we carry out our own investigations and research. The student work illustrated here is selected from MA, MA (Conversion) and Pg Dip Professional Landscape Architecture programmes this year.

In September 2019, the International Federation of Landscape Architects recognised the Climate Emergency. We partnered with Royal Parks to ask how can large parks go beyond resilience, towards added benefit - Parks Plus? With Royal Parks landscape, sustainability and transport officers, and with Camden's transport team, we began to understand the challenges they face. Armed with Greta Thunberg's

call to urgent action we challenged the bounds set by organisational structures. Is it possible, that as well as providing world class public leisure space, and being a heritage asset, the Royal Parks might be

- energy positive - no net inputs, contributing through solar panels, or ground source energy to the grid
- contributing even more to carbon capture
- productive landscapes as in WW2, - producing food through commercial/ community growing, or an edible landscape, produce hay or straw, forestry, biofuels,
- contributing to area flood risk management
- conserving water, from aquifer and mains supply
- supporting sustainable transport- electric vehicles/electric powered bikes, wider walking and cycling networks, removing all cars
- planning for high temperatures, summer droughts, and winter floods

Our field visit took us to Amsterdam, a contemporary city thriving on sustainable transport, wind power, water management, environmental innovation and the location of Bos Park a city park in a forest.

“... the moment we start behaving as if we were in an emergency, we can avoid climate and ecological catastrophe... But the opportunity to do so will not last for long ... We must start today. We have no more excuses”

Greta Thunberg, UK Houses of Parliament (23rd April 2019)

ROYAL PARKS/CAMDEN & AMSTERDAM

Students

PG Dip/Conversion 1:

Anne-Marie Osei-Sarfoh, Gaetano la Tanza, Julia Shirley-Quirk, Kuai Bing Wong, Lewis Reynolds, Liz Rasmussen, Max Brigden, Nathalie Foster, Ruth Ferguson, Shambhavi Sawant

MA /Conversion 2:

Caroline O'Farrell, Jackie Shallcross, Harvey Erhard, Lisa Peachey, Shannon du Hasky

instagram @uel_landscape

Special thanks to:

The Royal Parks: Sara Tome, Jane Pelly, Ellen Roelvink, Mat Bonomi, Matt Steinmann, Matt Higham. LB Camden: Karl Brierly, Daniel Bailey. Visiting Professionals: Andrea Dates (Townshend), Ceylan Belek (Martha Schwartz & Partners), Eduardo Carranza (Gustafson Porter Bowman), Jon Sheaff (Jon Sheaff Associates), Magda Pelka (Outerspace), Oliver Barden (Townshend), Richard Peckham (Shape), Sam Perry (LI D&I). PRG: Fenella Griffin (Untitled Practice), Susan Lowenthal (WSP), Tom Lonsdale (Placecraft), Eduardo Carranza (Gustafson Porter Bowman).

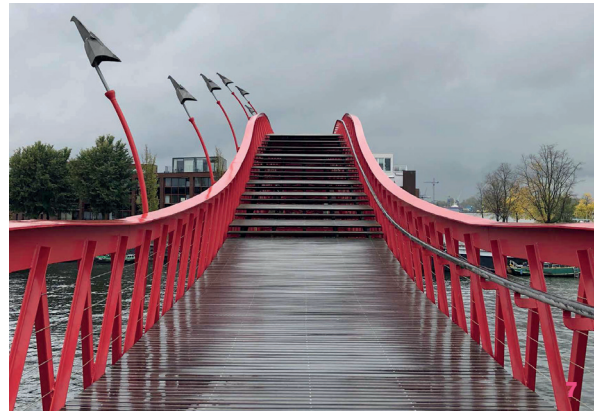
Thanks for placements to: Gustafson Porter Bowman, Martha Schwartz & Partners, Townshend



1 (Previous page) Community supported agriculture, produce market and community building, Caroline O'Farrell, Parks + **2** Buckthorne Cutting - student design & build forest classroom and outdoor cooking area, for 'Fourth Reserve' community group, Lewisham. Image Gaetano la Tanza. **3** Making tiles including clay dug on site, Kuai Bing Wong, Shambhavi Sawant, Shannon du Hasky **4** Concrete mixing and casting on site, Nathalie Foster, Shannon du Hasky, Anne-Marie Osei-Sarfoh, Ruth Ferguson, Caroline O'Farrell, Jackie Shallcross, Richard Peckham (Shape), Gemma Woodfall

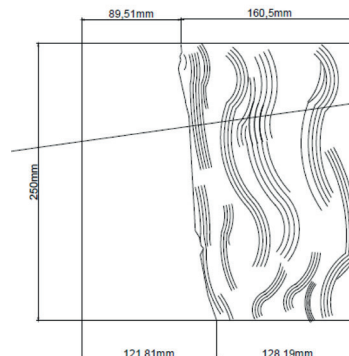
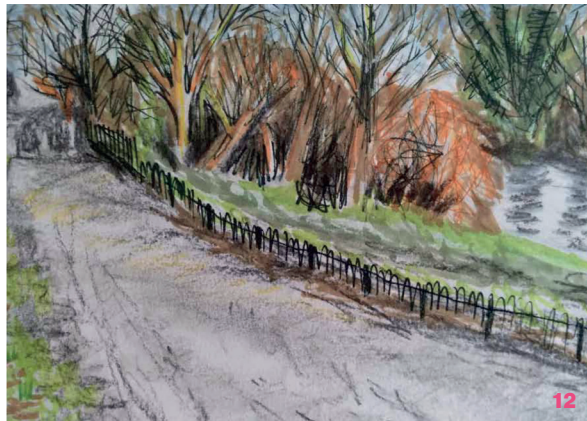
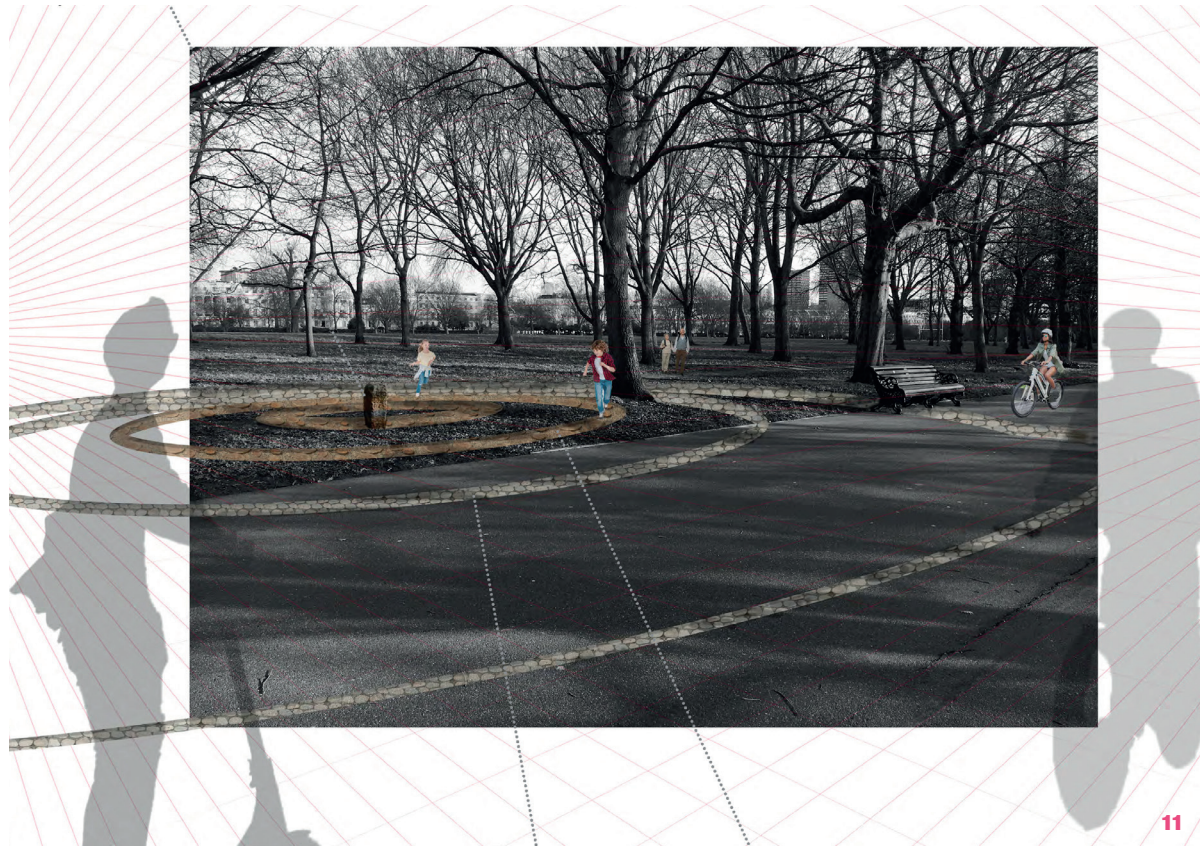


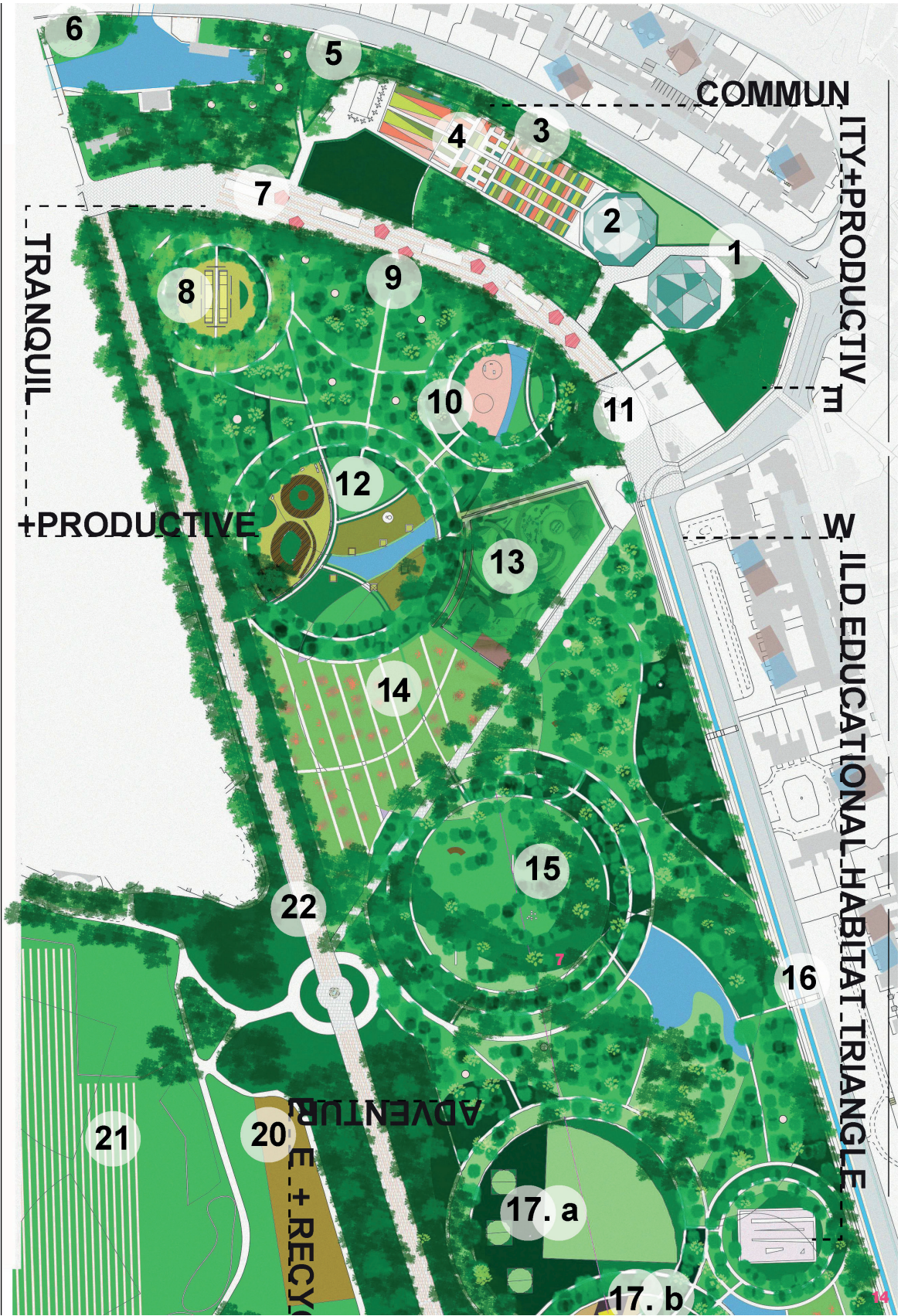
5 'High level' strategy to increase climate change mitigation value at Regents Park, Caroline O'Farrell and Jackie Shallcross. Top to bottom - Carbon, Water, Habitat, Sustainable Resources, & Movement strategies **6** Sustainable travel promoted using 'modal filter' and 'traffic calming'. Urban Route visualisation with planting, seating and raised table by Kuai Bing Wong **7** Borneo Sporenborg walking bridge, West 8, Amsterdam **8** Bos Park, hockey complex, Amsterdam **9** Community Supported Agriculture at 'Pluk', Amsterdam



"Inside, Outside, To and Through" a conceptual response to barriers and boundaries **10** 'Water Pavilion', new walking connection, Kuai Bing Wong **11** 'Woodland Ring' supporting playful walking routes along the Broadwalk, Jackie Shallcross **12** Sketch, Liz Rasmussen **13** Models and CAD drawing Anne-Marie Osei-Sarfoh

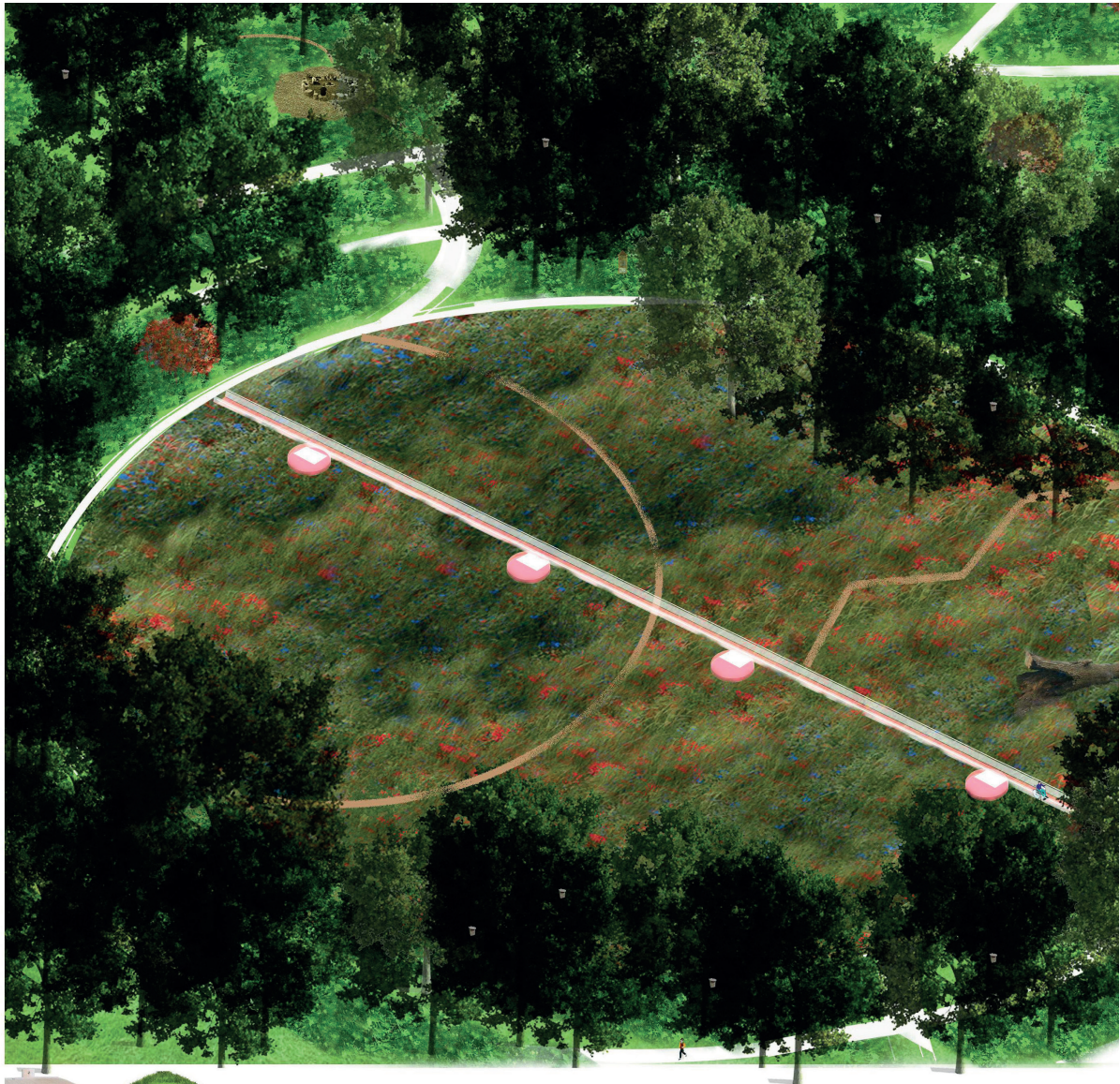
"Parks + @Regent's Park" major design project **14** Illustrative Masterplan, Caroline O'Farrell (opposite)





"Parks + @Regent's Park" major design project **15** 3D aerial view of tranquil zone, Caroline O'Farrell.

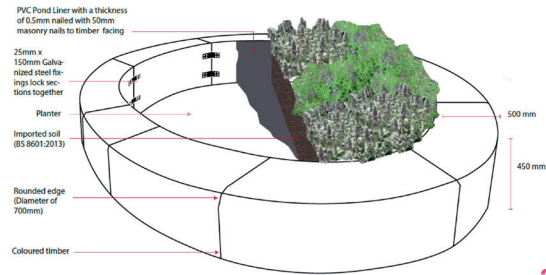
Opposite page **16** The explosive history of Macclesfield Bridge, Lewis Reynolds **17** Movement and access strategy, Anne-Marie Osei-Sarfoh **18** Extract from planting strategy, Liz Rasmussen **19** Illustrative masterplan, Lewis Reynolds.



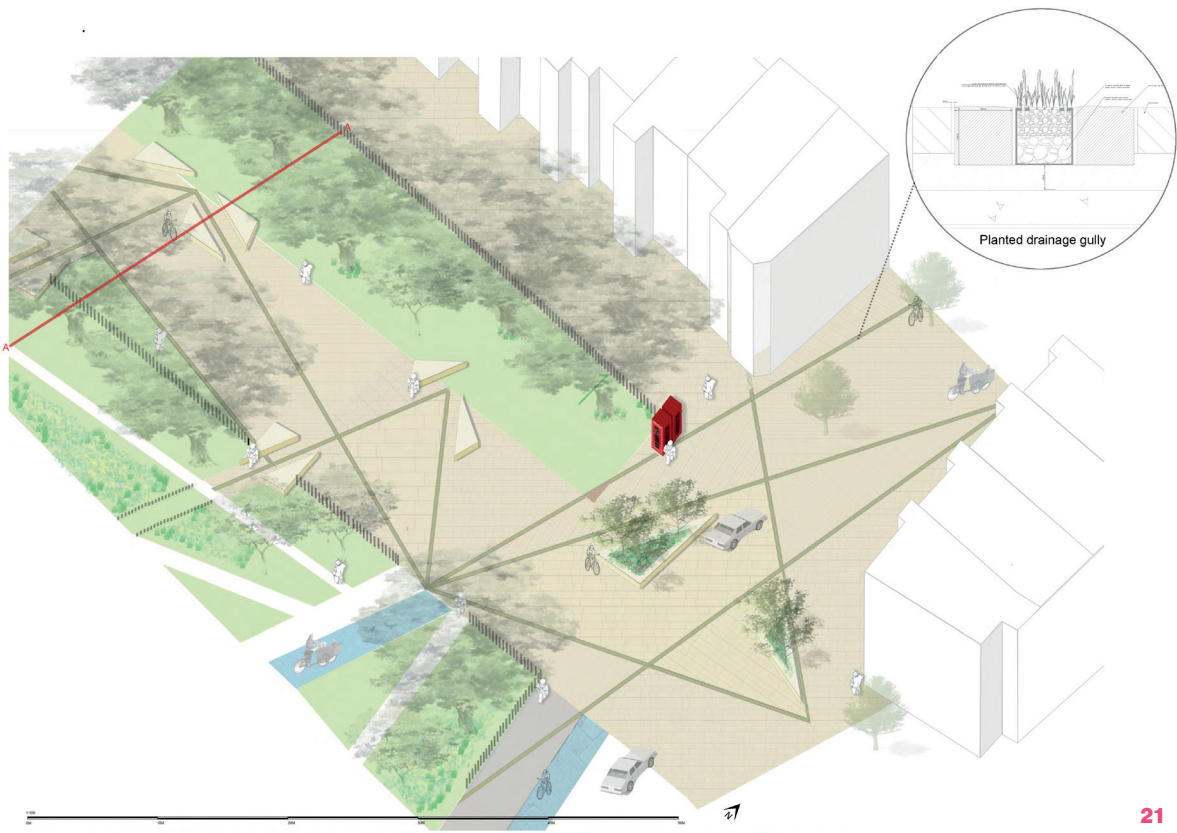
Pollinator path, Bird watching, Foraging Routes - hibernation boxes, chill zones, immersive planting, bee boxes.- Biotopes -Retention pond.

20 Temporary planter seats as modal filters Anne-Marie Osei-Sarfoh. **21** 'Primrose Hill Plaza, traffic calming /shared surface at park entrance, with self colonising green network in drainage strips. Design developed from Frank Auerbach 'Primrose Hill' Jackie Shallcross **22** Pavilion and walkway over surface flood water storage pond Kuai Bing Wong

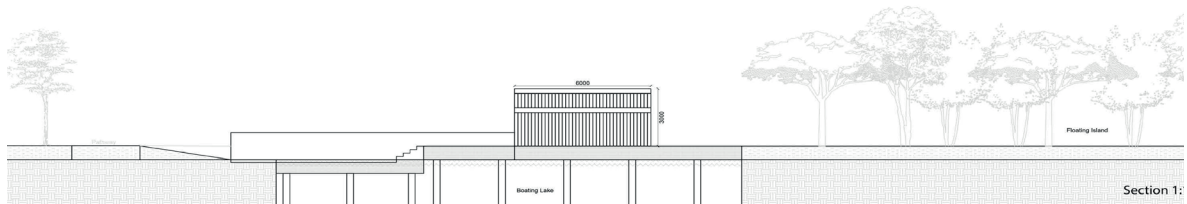
Opposite Page: **23** Landscape theory studies (Conversion year): Traffic changes and pedestrian/ cyclist movements, Van Gogh Walk Stockwell, Max Brigden **24** Planting plan, Jubilee Gardens, Shambhavi Sawant **25** Emotional response drawing Jubilee Gardens, Julia Shirley-Quirk **26** Longitudinal planting study, Ruth Ferguson, **27** Working in a professional context-students present to the landscape and sustainability team at the Royal Parks.



20



21



22



Fig. 13

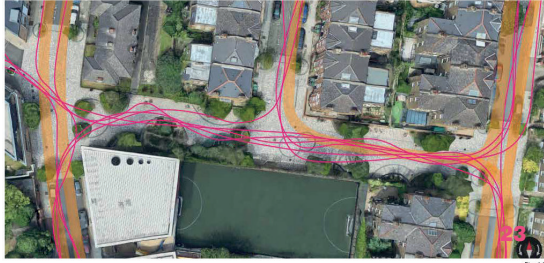


Fig. 14

- VEHICULAR TRAFFIC
- PEDESTRIAN TRAFFIC
- - - PEDESTRIANS CROSSING ROADS

- Lonicera japonica*
(Japanese honeysuckle)
- Carex elata*
(Tufted sedge)
- Ligustrum vulgare*
(Wild privet)



- Cornus sericea*
(Red-osier dogwood)
- Deschampsia cespitosa*
(Tufted hair grass)
- Rosa agrestis*
(Field briar)
- Rudbeckia fulgida*
(Orange coneflower)
- Buxus sempervirens*
(Common box)
- Phormium tenax*
(Newzealand flax)
- Heuchera sanguinea*
(Coral bells)

PLANTING PLAN
LOCATION: Jubilee Gardens



University of East London
www.uel.ac.uk

Cover image: Unit H - student drawing based on survey in Montemor-o-Novo

