

**Yearbook  
2020**

# AVA

**MA Interior Design**



University of  
East London



# MA Interior Design

Programme Leader: Claudia Palma Romao

This academic year the MA Interior Design will explore contemporary themes based on current global political-economic, social and cultural transitions in a period known as various aliases: late-capitalism, postmodernity, neoliberalism and globalisation. Approaching with real, allegorical and poetic references of the everyday collective, we will particularly discuss the concept of Community Space. We will analyse how space and design are responsible in the creation, sustainability and improvement of local and global communities, and will examine spaces that are shared between different people and programmes with the potential of forming and strengthening the dynamics and communities.

In our first experimental project we will explore themes of mobility, domesticity and displacement. Through a series of plays and performances, this exercise will provoke different ways of thinking and seeing qualities of space, conventional and unconventional typologies, interior vs exterior, and new emerging programmes in the flux of the contemporary city.

This investigation will then lead us to our second project, where we will address the urgent and emergent topic of migrant living. Through 2 specific real exercises, you will be asked to explore how space and design have the social responsibility of providing opportunities for integration, participation and empowerment in individuals with different social and cultural contexts. Questioning architectures of

(in)permanence, and how transient design could be a variety of things: built one day and disassembled another, as a nomad among environmental and geopolitical conditions, or spaces that house impermanent populations or respond to temporary phenomena or needs.

On term 2, on our final design project, concepts of Design for Change, Design for Care, and Design Activism will be applied through a close collaboration with local communities (live-projects) set at Somers Town, Camden Town, Kings Cross. Establishing pilot projects for sustainable, autonomous, and resilient communities. Empowerment through making.

These projects aim to reinforce skills and knowledge as designer, to better respond to the contemporary reality with a sophisticated and sustainable critic. For this a continuous articulation with art, visual cultures, literature, politics and economies will be tested and applied.

## Students

Ayca Aydin, Aysha Farhana, Bethany Hooper, Ed Chelsea Rimando, Himani Ravuri, Senuri Peththawadu, Tatiana Garcia Barca, Yuan Shiqi

[bit.ly/AD-Yearbook-MAID](https://bit.ly/AD-Yearbook-MAID)

[@uel\\_mainteriodesign](https://www.instagram.com/uel_mainteriodesign) [Instagram]

[www.soup-international.com](http://www.soup-international.com)

## Special thanks to:

Visiting Critics; Andrew Friend (Sugarhouse Studio), Warren Lee (SDCAS), Javier Calderon (Chalton Gallery), Renee Tobe, Carl Callaghan, Anastasia Karandinou, Susan Ginsberg, Rachel Brown.

Contributors; Southwark Center for Asylum Seekers (SDCAS), Story Garden - Make (Kings Cross), London Museums, Chalton Gallery, Cargo Collective, Crowdfunder.co.uk, Lightme Lusail, Qatar Airways, The Cock Tavern



**Design Emergency**

**Migrant Living**

**Refugees Mobile Community Kitchen**

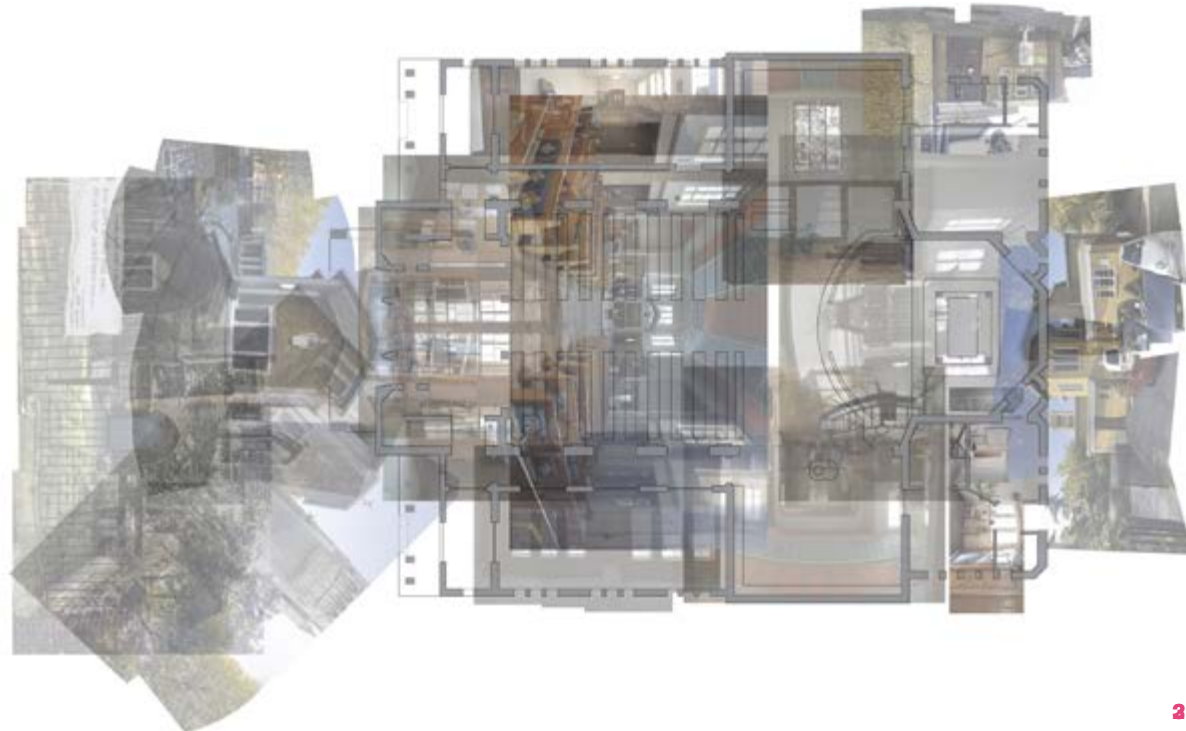
Client: Southwark Day Centre for Asylum Seekers SDCAS

**Platinum Award, UEL Volunteering Awards 2020**

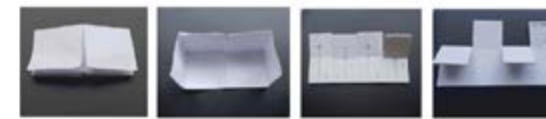
Addressing the urgent and emergent topic of migrant living, through a specific real design exercise, students were asked to explore how space and design have the social responsibility to provide opportunities for integration, participation and empowerment in individuals with different social and cultural contexts. Questioning architectures of (im)permanence, and how transient design could be a variety of things: different uses, built one day and disassembled another, or spaces that house impermanent populations or respond to temporary phenomena or needs, such as climate change, war, domestic violence, or for example the now so real, pandemics.

Working together with Southwark Day Centre for Asylum Seekers SDCAS (with the mission of supporting asylum seekers and refugees falling into destitution) we have examined the basic needs and social programmes with the larger role of promoting wellbeing, integration (post-trauma) and a more inclusive community.

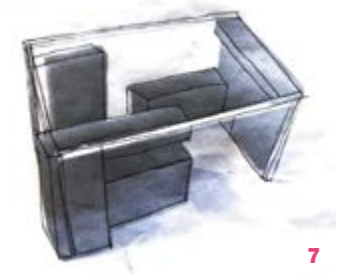
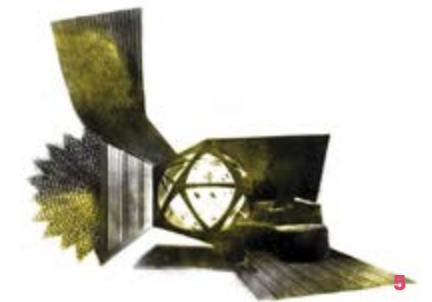
Being devoid of kitchen facilities in the SDCAS accommodation centres - the MA Interior Design has explored the theme of "Food" as an opportunity to rethink strategies of care, nourishment and identity, through a series of design proposals for a "Community Kitchen". This space aims to promote the celebration of "Food" as a cultural mechanism (ie. celebration of specific religious/ cultural festivities of the nationality involved), and as an experimental method for the "after asylum phase", where in a short period of 2 weeks Refugees (new status) have to find work - and where Food could be the vehicle for their integration into the host society.



1 Theory workshop with Renee Tobe: Image as Argumentative Tool, the "Atlas Mnemosyne" by Aby Warburg as methodology. 2 Site Photomontage, site images \* St Mary's Church Newington Green, SDCAS office. by Yuan Shiqi 3 Modular systems studies, models scale 1/50, constructive systems, conceptual thinking by Ayca Audin. 5 Artistic collage, based on research imagery by Yuan Shiqi 6 Artistic collage, based on research imagery by Bethany Hooper 7 Design development, sketches and model studies 1/50 by Yuan Shiqi



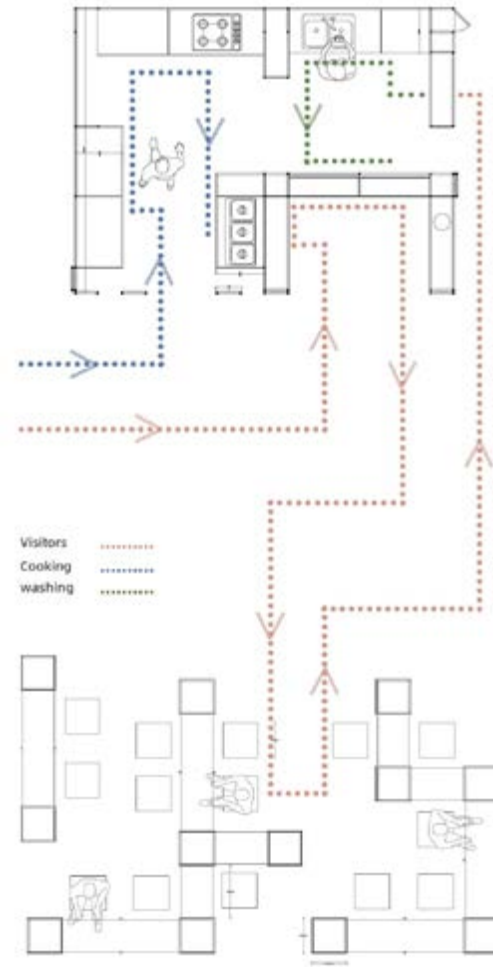
1/10 DETAILED MODEL STUDIES



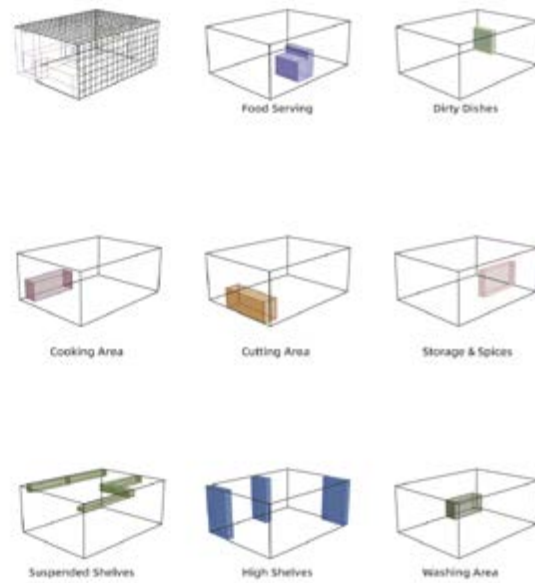
7



8, 9 Modular Systems and spatial organization + structural elements, work by Yuan Shiqi. 10 Modular organization plans, interactive mobility, transformational space, 11 Model studies of different modules and systems. 12 Axonometric proposal of spacial composition and design proposal, of the different components, work by Ayca Audin.



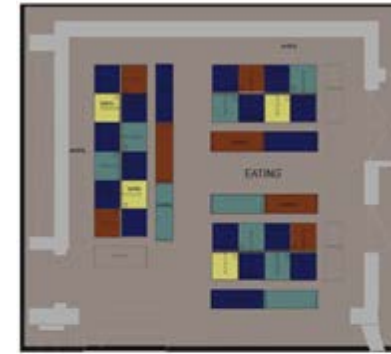
FUNCTIONS



8

9

MODULES ON PLAN  
SCALE 1:50



LAYOUT A FOR PROPOSAL 1



MODULE II  
60x60x75

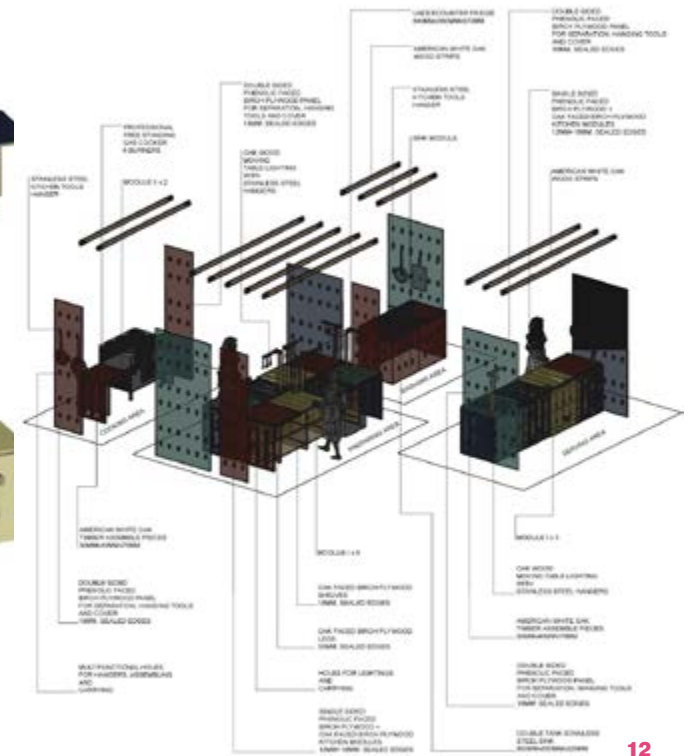
IN THREE DIFFERENT COLOURS

THE DIFFERENCE BETWEEN MODULE I AND MODULE II IS THE SIZE



10

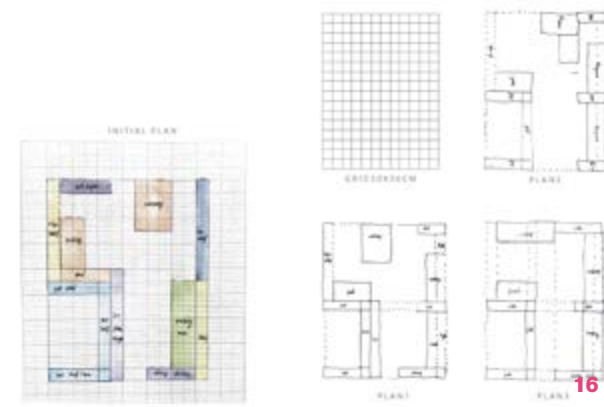
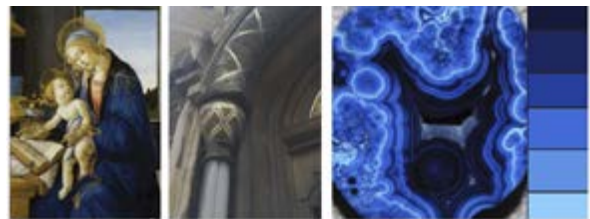
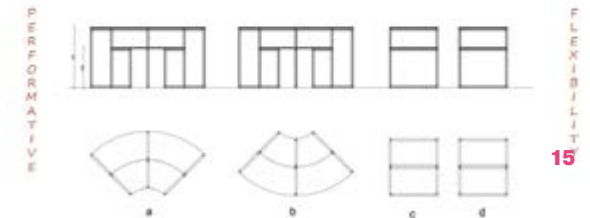
EXPLODED AXONOMETRIC OF PROPOSAL OPTION 1



12



13 Artistic collage, design process, conceptual thinking by Beth Hooper  
14 Research exploration and applied critical thinking by Beth Hooper. 15 Design development critical thinking, typologies studies by Himani Ravuri  
16 Spatial studies, plan diagrams, technical details, material studies by Yuan Shiqi  
17 'Modular systems digital models, design proposal by Aysha Farahna  
18 Modular mobile "transformers" adaptable to different programmes/ activities by Beth Hooper



SHELVING BOARDS CAN ALL BE STORED AWAY TOGETHER.  
FRAME UNIT WITH TRANSPARENT PVC COVER TO ALLOW OUTDOOR STORAGE AND A PLACE TO GROW FRESH HERBS.

CUTLERY HOLDER FITS TO FRAME, ROLLS UP FOR STORAGE AND TRANSPORT.  
PE GEORGES FITS TO THE FRONT OF THE COUNTER PROVIDES SPACE FOR STORAGE IF USED AS SERVING KIOSK AT MARKET OR EVENT

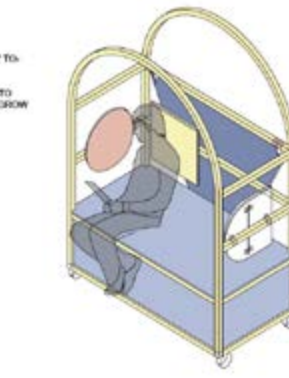
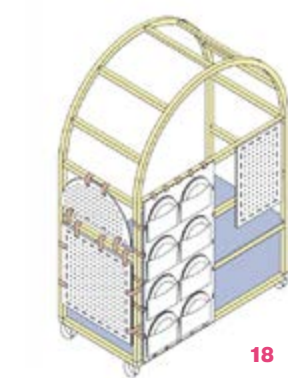


TABLE TOPS ATTACH TO BACK OF UNIT FOR STORAGE.  
STOOL TOPS ATTACH FOR USE AS CHAIRS.  
KITCHEN EQUIPMENT PACKS AWAY INTO BENCH SEAT

PE GEORGES ATTACH TO FRAME, WHEELS OR CURSORS TO CREATE EXTRA STORAGE FOR SMALL ITEMS.  
SHELVES CAN BE ATTACHED TO OUTSIDE OF FRAME BRING PELOS IN PELODING.  
PLATE STORAGE CAN BE FOLDED UP FOR STORAGE AND TRANSPORT.







**21** Rotar kitchen, design proposal by Tatiana Garcia Barca **22** Photomontage collage, design proposal by Yuan Shiqi. **23** Constructive details, material studies, scale 1/1 by Yuan Shiqi.



**Light Me Lusail Qatar II Edition 2020 Digital Art and Interactive Media Festival, Qatar**

**Video Art Award**

The MA Interior Design has been represented by Aysha Farhana, Senuri Peththawadu, Himani Ravuri, Beth Hooper, and Tatiana Garcia, in the II Edition of the Light Me Lusail - Digital Art and Interactive Media Festival in Qatar, who have been awarded a prize with a video art project. Our UEL students have developed a critical visual and sound narrative, exploring the current emergency of climate-change and extinction. Their video was showcased together with 10 renowned international digital media artists. The narrative follows the LML second edition theme surrounding the concept of respect "Respect".

This 2020 edition of the festival brings to Qatar innovative technologies and mediums in realm of Light Art and Digital Media. LightMe Lusail is solidifying Qatar's position as a Tourism & Cultural Hub, delivering creative and innovative entertainment solution, promoting diversity and unity among local communities, and delivering a clear message of #Respect to the international community through the universal language of Art.

**24, 25** Video Stills from "There is no Planet B" and " Hands", video work by Beth Hooper, Tatiana Garcia, Aysha Farhana, Senuri Peththawadu, and Himani Ravuri.





**Chalton Gardens**  
**Mental Health, Wellbeing and the City**

A community engagement project aimed at developing design strategies by addressing the concept of well-being and empowering communities in Somers Town, London. The design concept and atmosphere are communicated through the handling of a range of scales; from the interpretation of the broader site to the detailing of the materials and structures. For this brief, we were given a choice of two clients living in housing association flats in addition to a second site, a shared courtyard and a third, the local pub. We also had the opportunity to propose interventions in the street. Our team came up with design strategies individually by addressing the following requirements:

Promote health and wellbeing. Encourage community engagement and cohesion. Engage young people in positive activities. Improve spaces, places and estate regeneration. Reduce social isolation. Engage older people in positive activities. Improve access to training and education-based activities. Connecting communities with their green spaces. Improving mental health through the use of green spaces. Increase levels of arts and cultural activity. To expand design strategies to the wider Kings Cross area.



Clerkenwell Square, with The Polygon on left and St Aloysius Chapel on right (1890 engraving by Joseph Swan from an earlier sketch) A map of Somers Town in 1880



Debenhams Court - Council flats Devotion estate council housing

**SITE ANALYSIS:**  
**EXISTING COMMUNITY SERVICES**

1	2	3	4	5	6	7	8	9	10	11	12

13	14	15	16	17	18	19	20	21	22	23	24	25

**KEY**

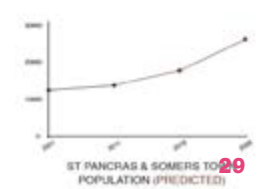
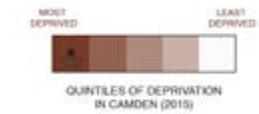
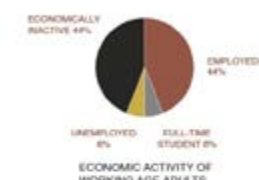
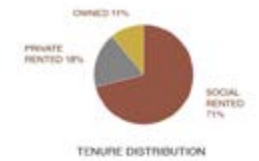

**SITE ANALYSIS:**  
**SOMERS TOWN**



VULNERABLE POPULATION  
 DIVERSE COMMUNITY  
 HIGH RISK OF LONELINESS IN RESIDENTS AGED OVER 65  
 HIGH LEVELS OF OBESITY  
 "YOU CAN GET ANYWHERE IN THE WORLD BASICALLY FROM SOMERS TOWN"

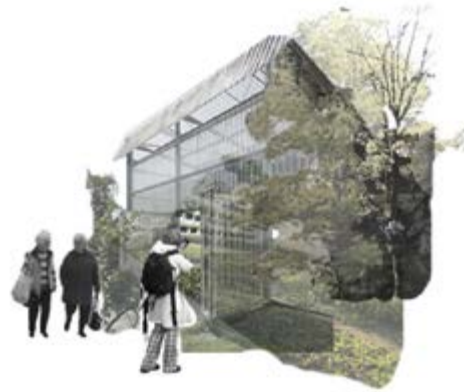
"HOUSING IS NOT ENOUGH"  
 Basil Johnson / St Pancras and Humanist Housing Association

secondhand clothing  
 Primary Schools  
 Social Housing  
 Chalton Gallery  
 Story Gardens  
 Chalton Street Market  
 Coffee House  
 The British Library





**30** Aerial view of "Story Gardens" community engagement eco-living: herbal and edible gardens, draing by Himani Ravuri. **32** Photomontages of green houses proposal - development of sustainable communities through shared grow-food cooperatives - resilient and autonomous banks, designed by Ed Chelsea Rimando **32** Inise/ outside playful hubs - mobile furniture - allocation of diffrent programs - modular systems by Aysha Farhana. **33** Master plan studies for the development of semi/private council states courtyards - creating resilient communities through edible gardens, medicinal gardens, and other shared activities. **34** sketch drawings by Senuri Peththawadu. **35** Courtyard strategies research by Bethany Hooper - perennial plants, seasonal gardening, biodynamic agriculture and permaculture concepts. Tipologies studies. by Bethany Hooper. **36** Green modular house by Tatiana Garcia Barca



Proposed Greenhouse Photomontage (Plantation Area - Exterior)  
Scale: NTS

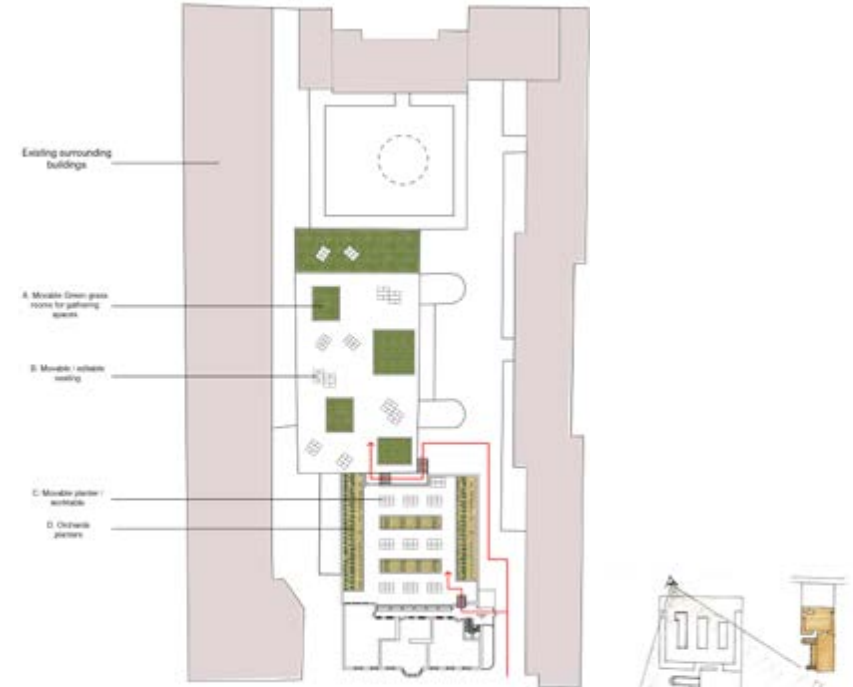


Proposed Greenhouse Photomontage (Workshop - Interior)  
Scale: NTS

31



30



33

Base of the existing floor plan and the basketball court



This space will work as a storage space for the courtyard, and also a seating area. Vegetables, fruits or flowers can be grown on top of it. It is made out of wood. A fun compartment for adults and kids, yet really practical.

36

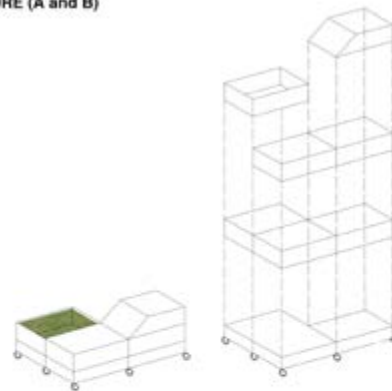
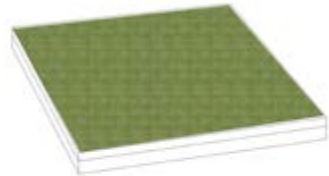


34

Highlighting important elements of the courtyard

**SITE INTERVENTION 1 - COURTYARD DESIGN PROPOSAL - MOBILE FURNITURE AND UNITS DETAILS - STRUCTURE (A and B)**

Unit A - These urban green grassrooms allows user to have a green space that can be customized according to their needs. Be it for rest or sport or any kind of social activity. These are created in the courtyard in different sizes so it can be used varily.



These simply pine wood public furnitures can be combined in multiple pices to create a large unit or can be used as a single unit. As its easily movable it creates a lot of different purposes.

These units can be even recreated in different parts of kings croos or even in Chalfon street as a stret side furniture.

Materials for the courtyard furniture:

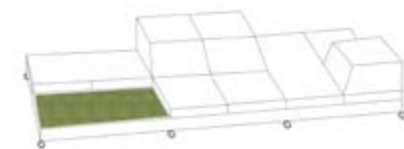


These metal grid structures are used in the Unit C in the following page.



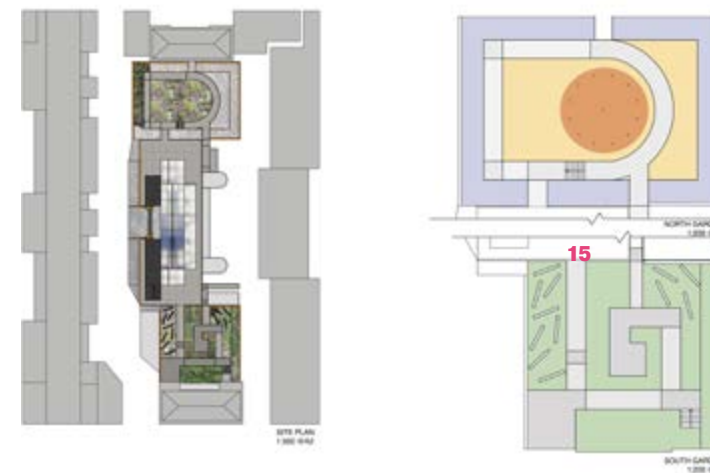
Pine wood sheets are used to create these Units A and B. These pine woods are used as the tops for the unit C in the following page.

These two options are shown to see what different ways it can be combined according to the needs.



All drawings in scale 1:50

32



15

16



35





**37** The Adaptable City, modules - a series of playful interrelational objects, interacting with various areas of Somers Town, articulating different programmes regarding the area they are placed. design by Aysha Audin. **38** Modular systemic inside/ outside furnitures, multifunctional utilities and programmes, design by Aysha Farhana. **39** Bread & Books market units, collaboration with British Library, The Cock Tavern Pub and Chalton Market. development of a "family of object which will be distributed along Kings Cross, St Pancras and Somers Town area. design by Himani Ravuri. **40** Designing for visually impaired - colour chart developed by Tatiana Ravuri. **41** Organization system for OCD people, modular, functional series of adaptable cabinets, design by Aysha Farhana. **40** Designing for visually impaired - mapping movements, gestures and objects. plan organization in a council state flat, working with a real client, design by Yuan Shiqi.

