



University of  
East London

**125** Years of  
Pioneering  
Futures

**Undergraduate Open Day**  
Docklands campus

**Open**

“

**I MET ONE OF THE PROFESSORS.  
THE CONVERSATION FELT  
QUITE MAGICAL, I COULD  
FEEL A CONNECTION WITH  
THE UNIVERSITY AND WITH  
THE PROFESSOR. SHE JUST  
GAVE ME THAT FEELING LIKE  
SOMEONE BELIEVES IN YOU.  
BELIEVE IN YOURSELF NOW AND  
TAKE THE OPPORTUNITY.**

Korell LLaudes,  
BA Architecture



Please scan the QR code  
to watch Korell's story



# WELCOME

Welcome to the University of East London Undergraduate Open Day!

Our experienced academics, support staff and ambassadors are here today to answer any questions you may have about our courses and how we can help you reach your career goals. We look forward to meeting you and helping you make an informed decision about your future!

We are here to guide you through the support available during your studies including our careers service, financial support packages, application help and advice. You can attend a range of dedicated talks, and workshops, including Student Finance, subject specific talks such as Performing Arts, Law and Finance and much more.

We want to make the Open Evening a great experience for everyone. Feel free to ask any questions you have and have some fun with the activities we'll be offering. Hopefully, you'll be joining our student body soon!



# PLAN YOUR DAY

- 1.** Check in at our registration area and collect your programme and freebies.

---
- 2.** Attend our Welcome talk and discover why the University of East London is a great place to study.

---
- 3.** Our subject talks and workshops give you the opportunity to learn more about your desired course and you'll be able to ask questions to academics and current students.

---
- 4.** Take a tour of our vibrant campuses. Check out our waterfront student accommodation and SportsDock facility at Docklands Campus.

---
- 5.** Visit our information zone and chat to representatives from our student support services.

**Refreshments:** Throughout the day you'll be able to enjoy free refreshments in the HUB in the East Building. Food and drink will also be available to purchase from Costa in West Building, and from a variety of outlets in University Square.

# SUBJECT LIST

## SCHOOL OF ARCHITECTURE, COMPUTING AND ENGINEERING

Architecture & Physical Design	11
Art & Creative Design	11
Computer Science & Digital Technologies	11
Construction, Transport & Logistics	11
Engineering	11

# SCHOOL OF ARTS AND CREATIVE INDUSTRIES

Animation	13
Fashion	13
Film	13
Games	13
Journalism	13
Media	13

# SCHOOL OF HEALTH, SPORT AND BIOSCIENCE

Sport	15
-------	----

# ROYAL DOCKS SCHOOL OF BUSINESS AND LAW

Hospitality, Events and Tourism	17
---------------------------------	----

# FINDING YOUR WAY

Our waterfront campus in the historic Royal Docks provides a modern, well-equipped learning environment, with modern lecture theatres and seminar rooms, a 24/7 library and learning centre, and a multimedia production centre - complete with audio and visual labs and studios.

## LOCATIONS

Aqua East	8	Ailsa House	A
AVA Building	3	Clare House	B
Docklands Library	1	Felix House	C
East Building	4	Jamilah House	D
Knowledge Dock	2	Kwame House	E
North Building	5	Longbridge House	F
Reception	6	Marley House	G
SportsDock	9	Redbridge House	H
Sports Pitch	10	Shephard House	J
West Building	7	Templars House	K



Key



DLR Station



Bus Stop



Building Entrance



Campus Boundary

London City Airport

Royal Albert Dock

How to find your room

# EB.G.06

EB = Building name

G = Floor

06 = Room number



# TALKS AND TOURS

Check out our full programme of talks and tours happening throughout the day. If you need any help in planning your time just ask one of our friendly student ambassadors.

Talks	Session 1	Location	Session 2	Location
<b>Welcome Talk</b>	10.15-10.45	Main Lecture Theatre, Docklands Library	12.15-12.45	EB.G.06, East Building
<b>Student Finance</b>	12:00 - 12:30	Main Lecture Theatre, Docklands Library	-	-
<b>Student Life</b>	12:30 - 13:00	Main Lecture Theatre, Docklands Library	-	-

## Personal Statement Support

Receive tailored advice and top tips on your personal statement. Find our desk in The Hub in the East Building between 11.00-15.00.



## Tours

Check out our amazing campuses, stunning accommodation and advanced SportsDock facilities with the 360 virtual tour. Our student ambassadors are running the tours so if you need info about what university life is like at UEL, don't hesitate to ask them!

Tours	Time	Location
<b>Accommodation</b>	At regular intervals between 10am-2.30pm	Residential Life stand in the East Building Atrium
<b>Campus</b>	At regular intervals between 10am-2.30pm	Campus Tour stand in the East Building Atrium



**Have a question?**

Meet our academics  
and get your questions  
answered in the  
AVA Foyer.

# SCHOOL OF ARCHITECTURE, COMPUTING AND ENGINEERING

## Facilities

The School of Architecture, Computing and Engineering ensures students have access to industry-standard facilities and embrace digital working and new technologies. There is a range of laboratories and workspaces containing sophisticated equipment that you'll be using from day one. You'll be able to tour some of these facilities during the workshop.

Workshops	Session 1	Session 2	Location
Architecture & Physical Design	11.00-12.00	13.00-14.00	AVA Atrium, AVA Building
Art & Creative Design	11.00-12.00	13.00-14.00	AVA Atrium, AVA Building
Computer Science & Digital Technologies	11.00-12.00	13.00-14.00	WB.3.01, West Building
Construction, Transport & Logistics	11.00-12.00	13.00-14.00	WB.G.02, West Building
Engineering	11.00-12.00	13.00-14.00	WB.G.02, West Building

**Before you go: Visit the VAC Exhibition in our Way Out East Gallery in the AVA Building to see what our amazingly talented Architecture & Physical Design, and Art & Creative Design students have been up to!**

# SCHOOL OF ARTS AND CREATIVE INDUSTRIES

**Have a question?**

Meet our academics  
and get your questions  
answered in the  
AVA Foyer.



<b>Workshops</b>	<b>Session 1</b>	<b>Session 2</b>	<b>Location</b>
<b>Animation</b>	11.00-12.00	13.00-14.00	WB.1.01, West Building
<b>Fashion</b>	11.00-12.00	13.00-14.00	AVA.1.40, AVA Building
<b>Film</b>	11.00-12.00	13.00-14.00	EB.1.37, East Building
<b>Games</b>	11.00-12.00	13.00-14.00	WB.1.07, West Building
<b>Journalism</b>	11.00-12.00	13.00-14.00	WB.3.02, West Building
<b>Media</b>	11.00-12.00	13.00-14.00	WB.2.01, West Building

## **Facilities**

Students are taught in discipline-specific spaces equipped with facilities, materials and equipment loans for making, performing and collaborating on practical projects. Fashion facilities at the Docklands campus include pattern cutting and sewing studios that boast state of the art machinery for manufacturing. Production and media students benefit from a range of green screen, newsroom, mac labs, edit, games and animation suites. You'll be able to tour some of these facilities during the workshop.





**Have a question?**

Meet our academics  
and get your questions  
answered in the East  
Building Atrium

# SCHOOL OF HEALTH, SPORT AND BIOSCIENCE



## Facilities

UEL houses sports science and sports therapy labs at our Docklands campus. The sports science facility allows the assessment of fitness components from those that are vital for every day health to those important for elite performance. The sports therapy lab, along with the sports therapy clinic, allows you to gain much needed applied, practical experience. You'll be able to tour some of these facilities during the workshop.

Workshops	Session 1	Session 2	Location
<b>Sport</b>	11.00-12.00	13.00-14.00	SD.1.03/04, SportsDock



## SportsDock

SportsDock offers affordable memberships to the local community, our corporate partners, students and staff at the University of East London. Our Centre is open to everyone, so no matter who you are, you can benefit from the expertise and experience of our Graduate Fitness Instructors and our excellent services.

# ROYAL DOCKS SCHOOL OF BUSINESS AND LAW

**Have a question?**

Meet our academics  
and get your questions  
answered in the East  
Building Atrium.





## Facilities

As well as the core teaching facilities at UEL, you'll have the chance to visit culture and tourism hotspots across the capital; we have major conference and sporting venues such as the ExCel Centre and Stratford Olympic Park on our doorstep, and fantastic links with museums, hotels and restaurants throughout London

Subject Talk	Session 1	Session 2	Location
<b>Hospitality, Events and Tourism</b>	11.00-12.00	13.00-14.00	DL.4.05, Docklands Library

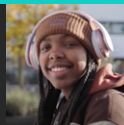
“

**AS A PROFOUNDLY DEAF STUDENT I AM EXCITED TO STUDY MEDIA PRODUCTION AT THE UNIVERSITY OF EAST LONDON. I AM SUPPORTED THROUGH MY STUDIES AND AM LEARNING SO MUCH TO BENEFIT MY FUTURE CAREER. I WANT TO CHANGE PERCEPTIONS AND SHOW DEAF CHILDREN THAT ANYTHING IS POSSIBLE FOR THEIR FUTURE.**

Jess Hungbeme,  
Media Production



Please scan the QR code  
to watch Jess' story



# STUDENT SUPPORT SERVICES

Whether you need support for dyslexia, advice about money or guidance on mental health, we're here for you.

<b>Student Support Service</b>	<b>Location</b>
<b>Admissions</b>	The Hub
<b>Careers &amp; Student Enterprise</b>	East Building Atrium
<b>Disability &amp; Dyslexia</b>	The Hub
<b>Information, Advice and Guidance</b>	The Hub
<b>International &amp; EU</b>	East Building Atrium
<b>Library &amp; Learning Services</b>	Docklands Library
<b>Residential Life</b>	East Building Atrium
<b>Student Finance</b>	The Hub
<b>Students' Union</b>	East Building Atrium
<b>Students Wellbeing</b>	The Hub

# UNDERGRADUATE SCHOLARSHIPS

The following non-repayable scholarships are available for new students starting in 2023/2024 via a competitive application. Scholarships are awarded based on a combination of merit and need.

- Vice-Chancellors Scholarship (£27,750 over course duration)
- Dean Scholarship (£13,500 over course duration)
- ELSEF Scholarship (£1,000 in the first year only)
- UTC Scholarship (£1,500 in the first year only)
- Sports Scholarships (Up to £6,000 per year)

To find out about the undergraduate scholarships and bursaries please attend one of our Student Finance talks where we will explain how the scheme works.

Talks	Session 1	Location
<b>Student Finance Talk</b>	12.00-12.30	Main Lecture Theatre, Docklands Library

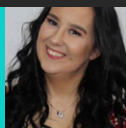
“

**I DIDN'T GROW UP WITH LOADS OF MONEY AND STUDYING IN LONDON DIDN'T SEEM LIKE AN OPTION FOR ME. I APPLIED FOR THE VICE CHANCELLOR SCHOLARSHIP AND GETTING IT HAS MEANT I CAN LIVE IN HALLS AND GET THE FULL UNIVERSITY EXPERIENCE.**

Michelle,  
BA Psychology



Please scan the QR code  
to watch Michelles' story



# HOW WE TEACH

We believe university life should be engaging, communal, cooperative, and hands-on. That's why our teaching model is designed to deliver a dynamic and fulfilling learning experience.



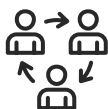




Through our Virtual Learning Environment, you can access lectures, notes, readings, and other online sources to keep learning even when classes aren't happening.



Allocated time for sport, volunteering, and career development. Plus, you have leading clubs and societies which are great for personal growth and you'll also get to enjoy yourself in the process!



From start to finish, learners have access to a range of support including academic advisers, tutors, career coaches and wellbeing advisers. This ensures you're always receiving the personalised help you need.



You'll have more face-to-face learning opportunities with a 2.5-day block on campus, plus lots of extra chances to learn and progress your career.



You can get access to tools and specialised spaces that are at the same level as what you would find in a professional workspace. It's an amazing way to get ready for your future career.

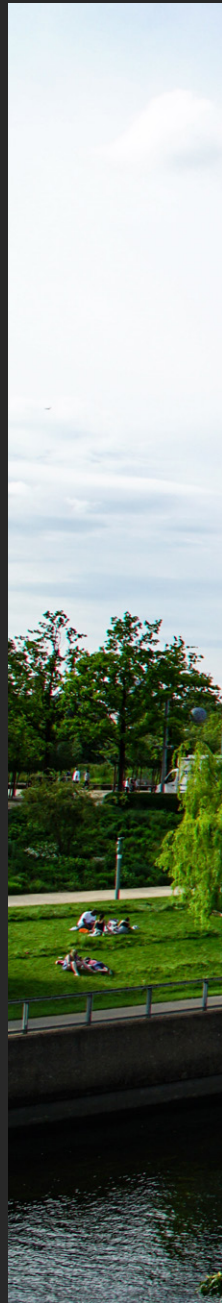


Our Career Zones provide the best of both worlds to prepare you for your future employment – online and on-site support. Get advice and connect with hiring managers, practice your interview skills, and find out all about available internships, networking opportunities and business start-up support.

East London is a great area to live, study and work. It's jam-packed with possibilities to explore and develop - it's one of a kind! Docklands is awesome for students, with amazing transport links, a gorgeous green environment, and some really cool spots to visit. Whilst you're in the area you could:

- Get your beach vibes on (no sunshine required) at London's only cable wakeboarding park.
- Explore art, nature and heritage in London's first dedicated art walk. This runs from the Olympic Park to the Greenwich Meridian with plenty of stops along the way.
- Take a ride on the IFS Cloud Cable Car and take in the epic views of East London.
- Grab some authentic Indian street food in unfussy surroundings at Thattukada restaurant.

# DISCOVER EAST LONDON





Explore more of East London with Saiful









**THE UNIVERSITY OF EAST  
LONDON IS A GREAT PLACE TO  
DISCOVER YOUR POTENTIAL.  
WE THINK THAT EVERYONE  
SHOULD HAVE A CHANCE TO  
PURSUE THE JOBS OF THEIR  
DREAMS - AND WE'RE HERE TO  
PROVIDE YOU WITH THE SKILLS  
SO YOU CAN MAKE IT HAPPEN.  
PLUS, OUR UNIVERSITY IS  
DIVERSE, CREATIVE AND  
INSPIRING - SO YOU'LL ENJOY  
THE JOURNEY.**

# DID YOU ENJOY THE OPEN DAY?

We'd love to hear what you thought of the Open Day and what we could do to improve future events. Scan the QR code and complete a short survey. If you leave your details, you'll be entered into a prize draw and could be in with a chance to win a £25 Amazon voucher.



Scan for your  
chance to win

-  universityofeastlondon
-  @UEL\_News
-  @universityofeastlondon
-  @universityofeastlondon

[uel.ac.uk](http://uel.ac.uk)